

## >> HUMAN RESOURCES PLANNING

- > Staff assignments planning via a graphic calendar surface (drag & drop)
- > Comprehensive assignment planning for management level incl. vacation planning
- > Assignment overview for each staff member
- > Monitoring of target and actual hours and target and actual turnover



## >> ENERGY MANAGEMENT

- > Definition of consumption meter incl. recording of meter reading
- > Evaluation of energy costs (e.g. annual comparisons)

## >> WASTE DISPOSAL MANAGEMENT

- > Recording of the AVV (European ordinance) key numbers
- > Management of waste data sheets
- > Organization of a dangerous good cadastral with appropriate symbols
- > Assignment to locations
- > Cost and quantity evaluation

## >> RISK ASSESSMENT

- > Risk assessment of object master data in regard of industrial safety and Eex

## >> DOCUMENT MANAGEMENT

- > Assignment of any documents / supply units
- > Categorization of documents
- > Assistant for a quick assignment

## >> HELPDESK

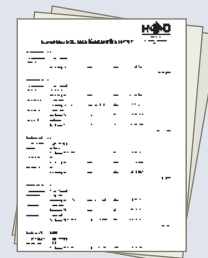
- > Documentation of calls with optional order generation and forwarding
- > Development of a knowledge data base with full-text search
- > Evaluation in regard of users, frequencies and duration of calls
- > Remote access by an external remote maintenance software

## >> DESIGNER

- > Easy customizing: adaptability of almost all masks and fields via a graphic interface and a context menu
- > User group related definition of masks
- > Generation of new fields or possible change of existing fields and their names
- > Definition of mandatory fields and display of the appropriate information

## >> EVALUATIONS / STATISTICS

- > Large number of predefined reports
- > Reports can be changed and be recreated by user
- > Client-dependent evaluation possible
- > Printout and export as PDF, MS-Word and HTML possible
- > Graphic evaluations via query generator



## >> DATA EXCHANGE

- > Interfaces to different service providers (e.g. AMD, Dräger, TÜV)
- > Import / export functions for different formats (e.g. ASCII, Excel, DBF)
- > Automatic execution with timing
- > Definition of exchange parameter via a graphic interface
- > Free-definable interface to subordinate systems (financial accounting and asset accounting)

## >> DATABASES

- > Microsoft SQL Server
- > Oracle Server
- > IBM Informix Server
- > Microsoft VisualFoxPro

## >> INSTALLATION REQUIREMENTS

- > Operating systems: Windows 2000, 2003, XP, Vista
- > Pentium IV or compatible
- > 512MB RAM (Vista 1GB RAM)
- > 80GB hard disk

## >> OUR SERVICES

- > Consulting
- > Project management
- > Installation
- > Training
- > Hotline and remote maintenance

## >> SCREENINGS

- > If required and prior consultation

## >> DEMO VERSION REQUEST

- > Phone: +49 (0)421 -51456-0
- > Email: [info@haendschke.de](mailto:info@haendschke.de)
- > [www.haendschke.de](http://www.haendschke.de)

We are a Microsoft Certified Partner



# HSD

Händschke  
Software & Datentechnik  
GmbH

# HSD<sup>FM</sup> MT/BT-DATA

Since more than 20 years  
Strong Performance – Fair Price

HSD Händschke Software & Datentechnik GmbH  
Otto-Lilienthal-Str. 27 · 28199 Bremen · Germany  
Phone +49 (0) 421 - 51 45 6-0 · Fax +49 (0) 421 - 51 15 29

## HSD Händschke Software & Datentechnik GmbH

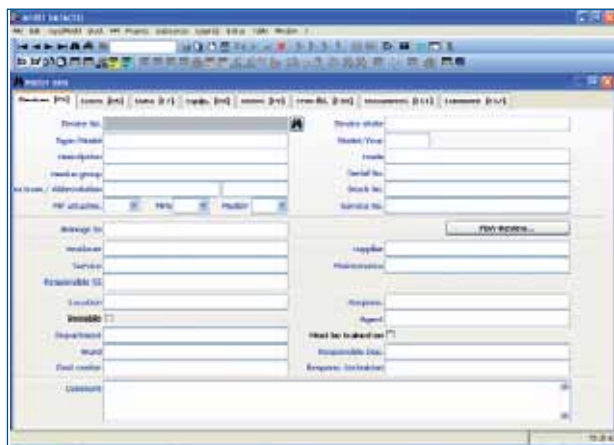
Since more than 20 years, HSD Händschke Software & Datentechnik successfully develops solutions for maintenance and facility management in hospitals. Products of HSD have been installed worldwide more than 4000 times.

The module MT-DATA enables the documentation and management of medical devices, the module BT-DATA for installation and building services. The above-named modules are also available as combination program MT/BT-DATA.

Regardless of which module is used, you get a high-capacity software which is characterized by easy usability and individual options with maximum efficiency. This software is, as well beyond hospitals, the perfect solution for every industry.

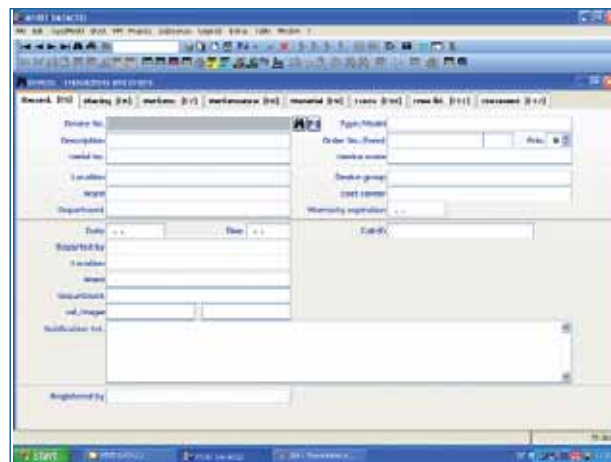
## >> FACILITIES / DEVICES

- > In compliance with the requirements of the Medizinproduktegesetz (MPG) and MPBBetreibV
- > Recording of any object master data, miscellaneous maintenance groups, e. g. medical / building engineering, IT etc. incl. storage of technical detail
- > Definition of device systems incl. maintenance history of systems
- > Specific module for bed management
- > Maintenance planning e. g. for STK, MTK, BGV etc.
- > Documentation about briefed staff incl. recording of electronic signature
- > Generation of pass cards
- > Substantial cost functions like cost center, cost of current fiscal year, write-offs, maintenance quotient
- > Linkage to facility management
- > Fleet management



## >> ORDER AND REPAIR MANAGEMENT

- > Process Support for order handling facilities / devices
- > Automatic commissioning via date / maintenance planning
- > Cost transparency by an efficient order documentation
- > Budget planning with cost transparency in real-time
- > Optional supervisor functions for orders (e. g. cost limits, approval functions)
- > Factory master control system interface with automatic order generation



## >> TEST EQUIPMENT INTERFACE / TEST INSTRUCTIONS

- > Connection of various measuring systems (manufacturer independent)
- > Direct controlling of measuring systems or possibility to read in saved measurements
- > Free definable test instructions with limit value monitoring, materials consumptions and costs
- > Generation of free definable test reports as printout, PDF or email

## >> INSPECTOR AND EXPERT VERSION

- > Available especially for inspectors and experts: MT-DATAPrüf and MT-DATALight
- > Optional client and project management for service providers
- > Materials Logistics / Stock

## >> DEFINITION OF DIFFERENT STORAGE LOCATIONS

- > Control of nominal, actual and minimum stock level
- > Generating of material sourcing orders
- > Stock incoming and outgoing bookings
- > Inventory support

## >> WEB-MODULE

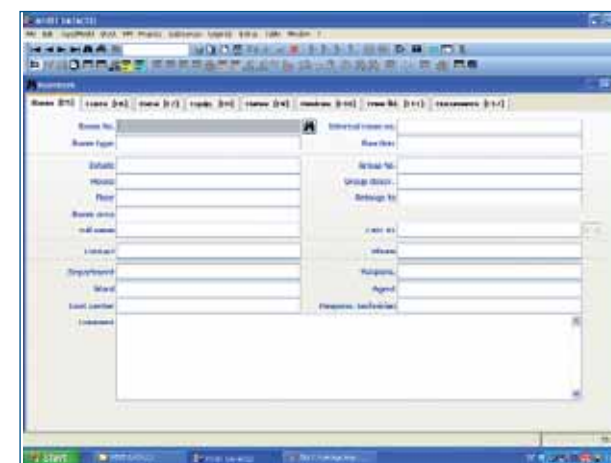
- > Intranet / Internet solution
- > Access to facilities, devices, room book, orders etc. via web browser
- > Almost same handling
- > Minimum installation effort
- > Worldwide availability



## >> BUILDING / AREA MANAGEMENT

### Room Book

- > Substantial area management
- > Individual definition of space types
- > Characterizing of surface (e. g. material, texture, relevance)
- > Cleaning management
- > Cost assignment by personal-use value
- > Recording of inventory (e. g. chattels)
- > Rental agreements
- > Checklists for rooms and job instructions
- > Assignment of protection zones according to EEx



### Room occupancy planning

- > Room utilization planning and reservation via a graphic calendar surface

### Bi-directional AutoCAD<sup>TM</sup> Interface

- > Import / export of room, area, device, and inventory data
- > Flexible adaption to existing AutoCAD<sup>TM</sup> charts
- > Direct call of stored objects in a drawing from MT/BT-DATA and other way round

### FM Navigator

- > Tree structure display of hierarchical structures (e. g. properties – houses – floors – rooms – etc.)

### Media Circuits

- > Display of object connections to media types
- > Free definable media types (e. g. gas, water, network, electricity)
- > Assignment to rooms and facilities possible
- > Easy one-click-search after all objects assigned to a media circuit

### Fire Protection

- > Recording of fire protection elements
- > Control of test cycles
- > Documentation of tests

## >> KEY MANAGEMENT

- > Turnkey planning
- > Cylinder and key management
- > Cylinder and key ordering
- > Giving / return of keys incl. recording of digital signatures

## >> OPENNET / OFFLINE MODULE

- > Data editing even without network (e. g. notebook)
- > Synchronization of all data with the central MT/BT database
- > Real-time encryption of data on mobile clients

## >> PDA MODULE

- > Mobile data recording via PDAs
- > Editing of master data, orders and tests
- > On-site inventory via barcode technology
- > Synchronization with central MT/BT database

